

# **Appendix A – Preliminary Alignments and Public Involvement**

A-1 Primary Alignment and 17 Alignment Options Presented to Public

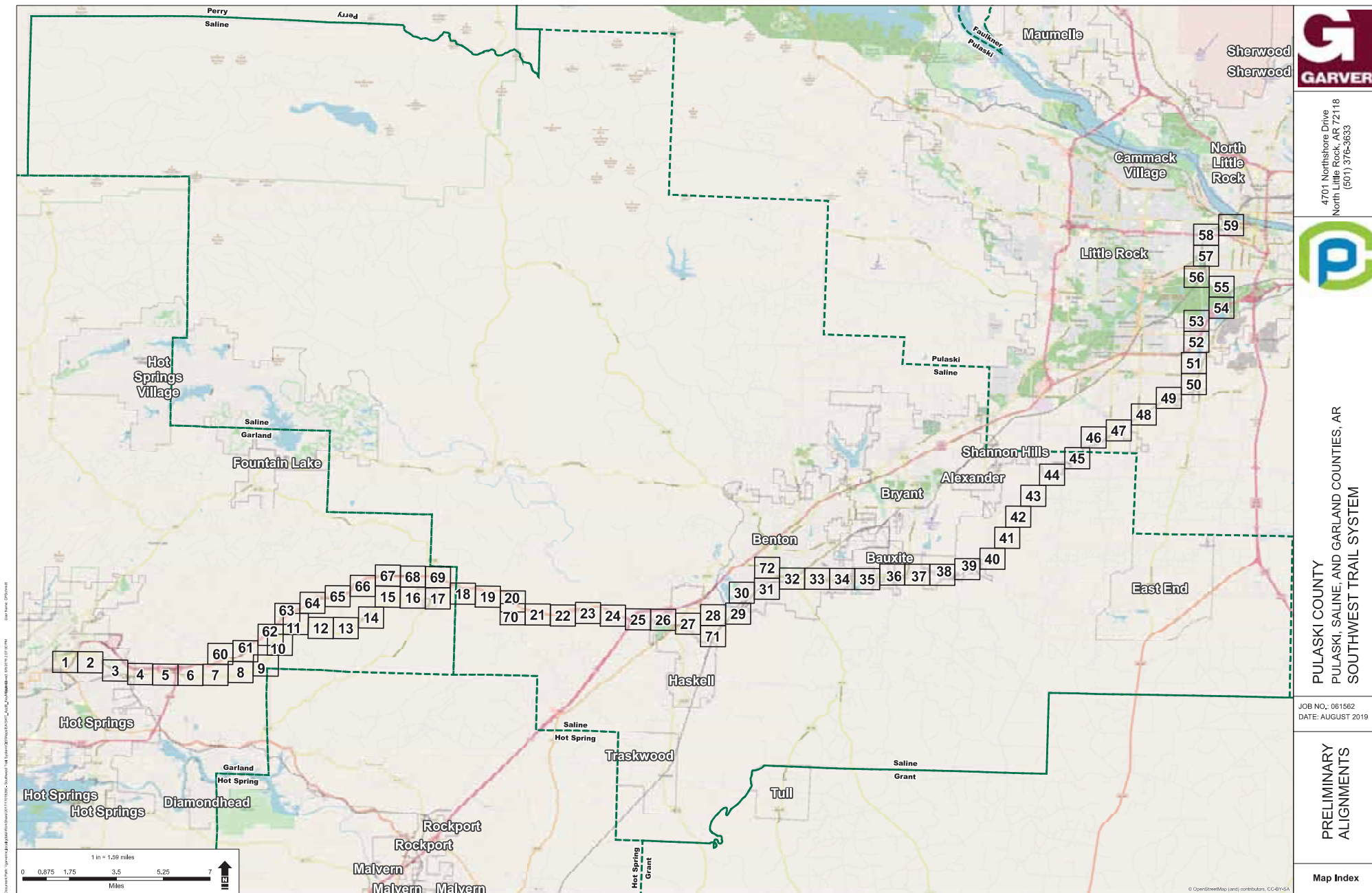
A-2 Public Involvement Synopsis Report

A-3 List of Stakeholder Meetings

A-4 Option Screening Following Public Meeting

# Appendix A-1

## Primary Alignment and 17 Alignment Options Presented to Public



4701 Northshore Drive  
North Little Rock, AR 72118  
(501) 376-3633



PULASKI COUNTY  
PULASKI, SALINE, AND GARLAND COUNTIES, AR  
SOUTHWEST TRAIL SYSTEM

JOB NO.: 061562  
DATE: AUGUST 2019

PRELIMINARY  
ALIGNMENTS

Map Index

© OpenStreetMap (and) contributors, CC-BY-SA

















	<p>4701 Northshore Drive North Little Rock, AR 72118 (501) 376-3633</p>
	<p>PULASKI, GARLAND, AND SALINE COUNTIES GARLAND COUNTY, ARKANSAS SOUTHWEST TRAIL SYSTEM</p>
<p>JOB NO.: 061562 DATE: NOVEMBER 2018</p>	<p>PRELIMINARY ALIGNMENTS</p> <p>Page 4 of 72</p>






4701 Northshore Drive North Little Rock, AR 72118 (501) 376-3633

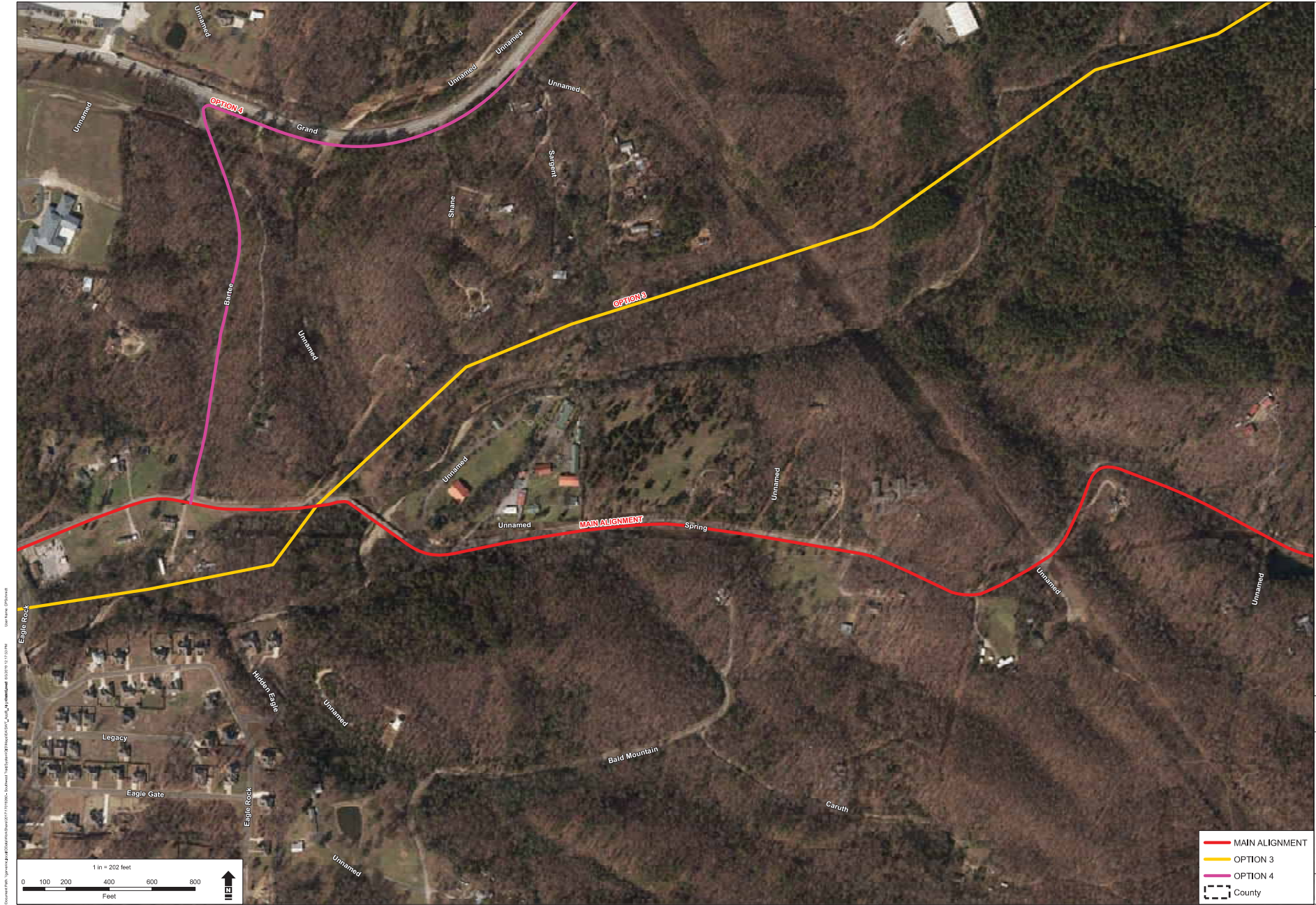
PULASKI, GARLAND, AND SALINE COUNTIES GARLAND COUNTY, ARKANSAS SOUTHWEST TRAIL SYSTEM
JOB NO. 061562 DATE: NOVEMBER 2018
PRELIMINARY ALIGNMENTS
Page 5 of 72





	<p>4701 Northshore Drive North Little Rock, AR 72118 (501) 376-3633</p>
	<p>PULASKI, GARLAND, AND SALINE COUNTIES GARLAND COUNTY, ARKANSAS SOUTHWEST TRAIL SYSTEM</p>
<p>JOB NO.: 061562 DATE: NOVEMBER 2018</p>	<p>PRELIMINARY ALIGNMENTS</p> <p>Page 6 of 72</p>






4701 Northshore Drive North Little Rock, AR 72118 (501) 376-3633

PULASKI, GARLAND, AND SALINE COUNTIES GARLAND COUNTY, ARKANSAS SOUTHWEST TRAIL SYSTEM
JOB NO. 061562 DATE: NOVEMBER 2018
PRELIMINARY ALIGNMENTS
Page 7 of 72






4701 Northshore Drive North Little Rock, AR 72118 (501) 376-3633

PULASKI, GARLAND, AND SALINE COUNTIES GARLAND COUNTY, ARKANSAS SOUTHWEST TRAIL SYSTEM
JOB NO.: 061562 DATE: NOVEMBER 2018
PRELIMINARY ALIGNMENTS
Page 8 of 72





4701 Northshore Drive  
North Little Rock, AR 72118  
(501) 376-3633



PULASKI, GARLAND, AND SALINE COUNTIES  
GARLAND COUNTY, ARKANSAS  
SOUTHWEST TRAIL SYSTEM

JOB NO.: 061562  
DATE: NOVEMBER 2018

PRELIMINARY  
ALIGNMENTS

MAIN ALIGNMENT  
County









4701 Northshore Drive  
North Little Rock, AR 72118  
(501) 376-3633



PULASKI, GARLAND, AND SALINE COUNTIES  
GARLAND COUNTY, ARKANSAS  
SOUTHWEST TRAIL SYSTEM

JOB NO.: 061562  
DATE: NOVEMBER 2018

PRELIMINARY  
ALIGNMENTS





4701 Northshore Drive  
North Little Rock, AR 72118  
(501) 376-3633



PULASKI, GARLAND, AND SALINE COUNTIES  
GARLAND COUNTY, ARKANSAS  
SOUTHWEST TRAIL SYSTEM

JOB NO.: 061562  
DATE: NOVEMBER 2018

PRELIMINARY  
ALIGNMENTS

MAIN ALIGNMENT  
County









4701 Northshore Drive  
North Little Rock, AR 72118  
(501) 376-3633



PULASKI, GARLAND, AND SALINE COUNTIES  
GARLAND COUNTY, ARKANSAS  
SOUTHWEST TRAIL SYSTEM

JOB NO.: 061562  
DATE: NOVEMBER 2018

PRELIMINARY  
ALIGNMENTS





4701 Northshore Drive  
North Little Rock, AR 72118  
(501) 376-3633

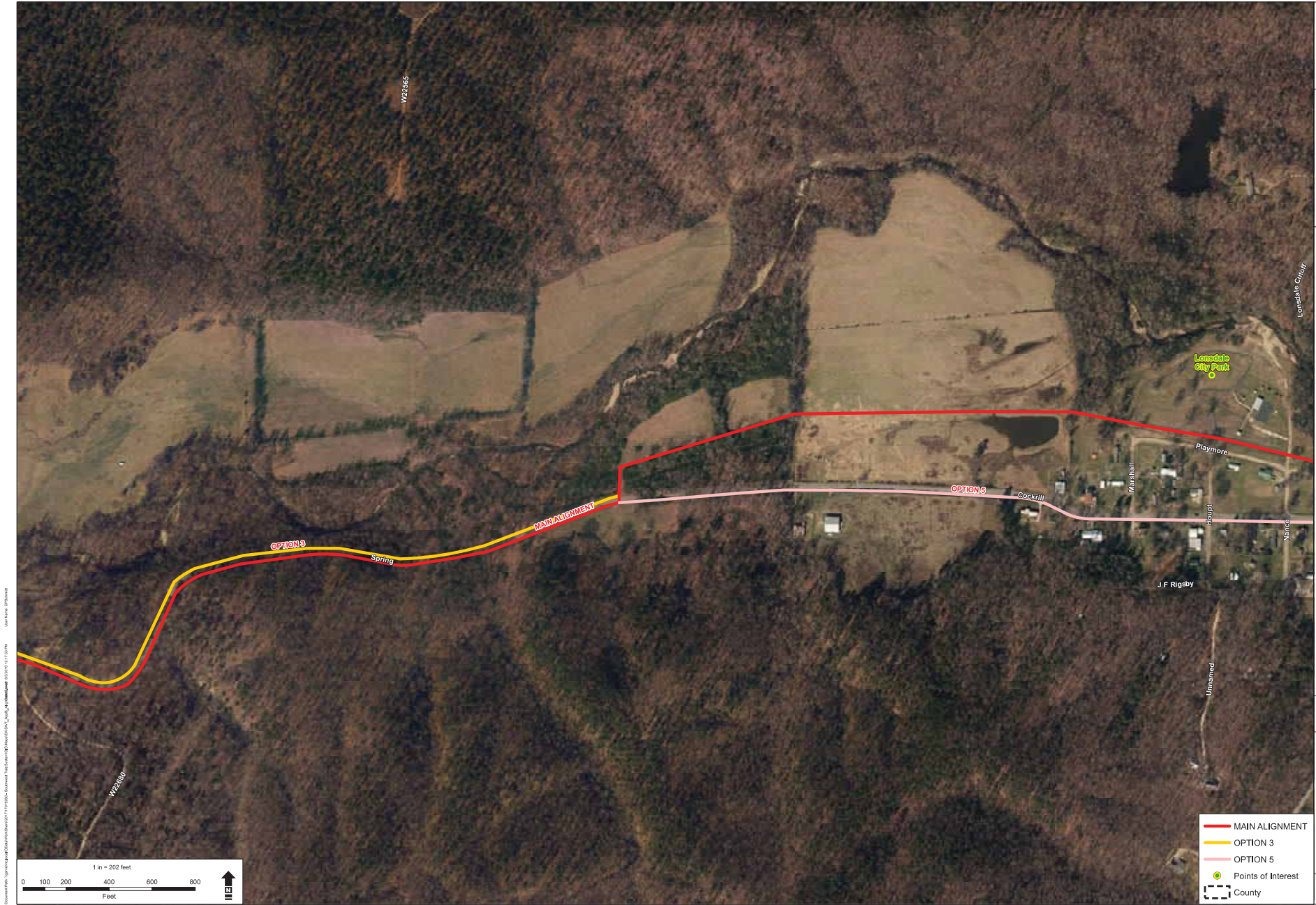


PULASKI, GARLAND, AND SALINE COUNTIES  
GARLAND COUNTY, ARKANSAS  
SOUTHWEST TRAIL SYSTEM

JOB NO.: 061562  
DATE: NOVEMBER 2018

PRELIMINARY  
ALIGNMENTS





4701 Northshore Drive  
North Little Rock, AR 72118  
(501) 376-3633

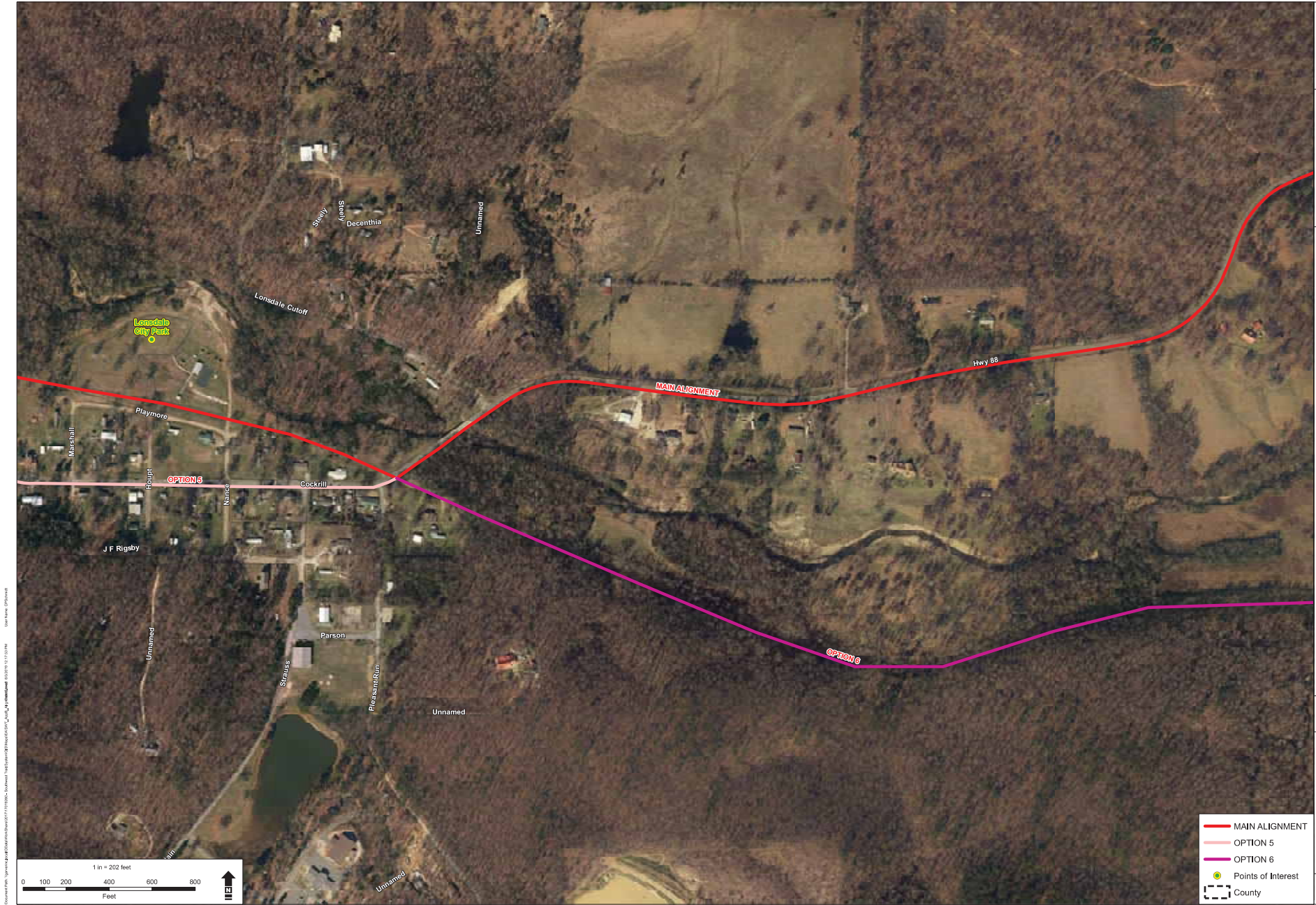


PULASKI, GARLAND, AND SALINE COUNTIES  
GARLAND COUNTY, ARKANSAS  
SOUTHWEST TRAIL SYSTEM

JOB NO.: 061562  
DATE: NOVEMBER 2018

PRELIMINARY  
ALIGNMENTS







4701 Northshore Drive  
North Little Rock, AR 72118  
(501) 376-3633



PULASKI, GARLAND, AND SALINE COUNTIES  
GARLAND COUNTY, ARKANSAS  
SOUTHWEST TRAIL SYSTEM

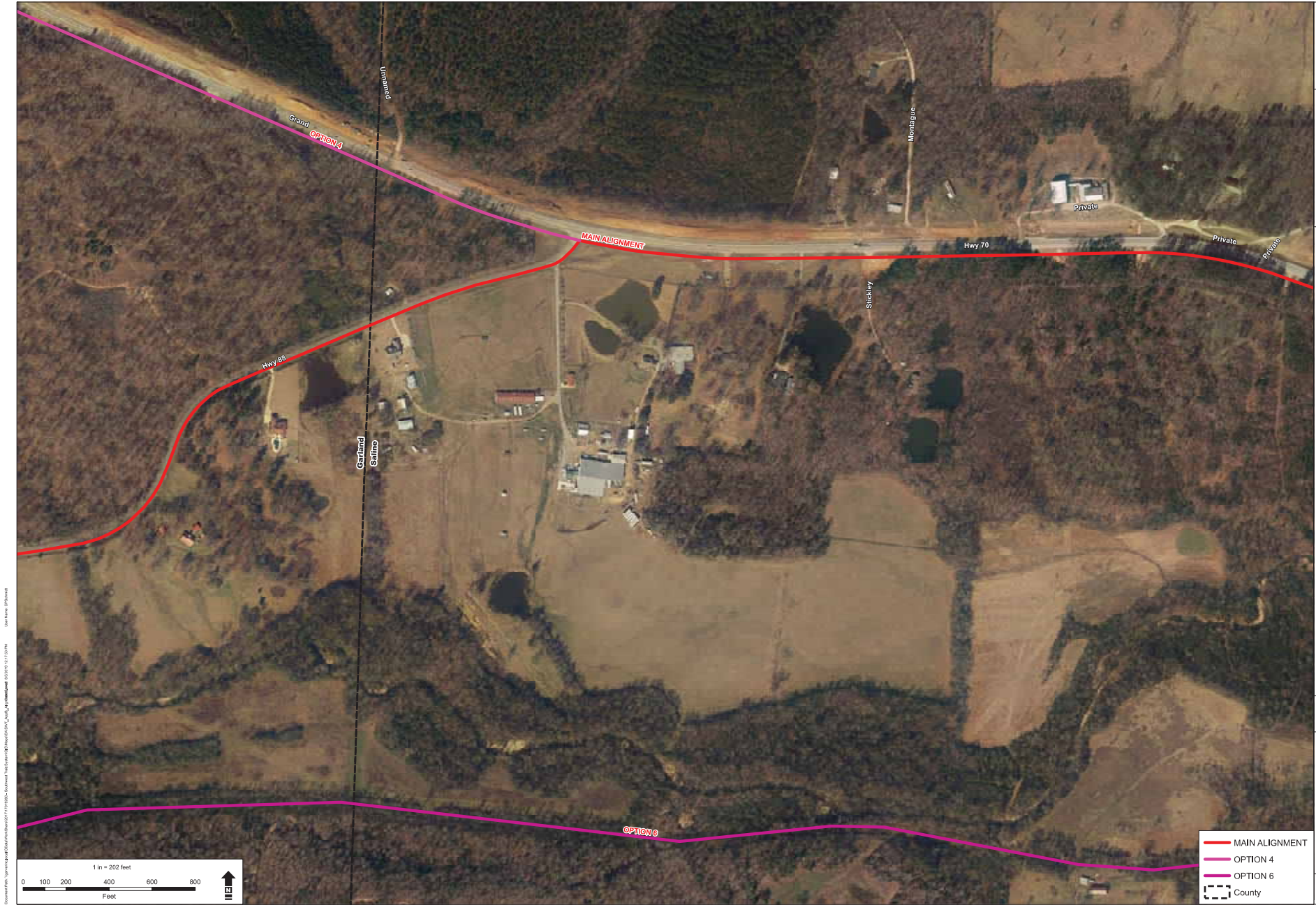
JOB NO.: 061562  
DATE: NOVEMBER 2018

PRELIMINARY  
ALIGNMENTS

Page 17 of 72

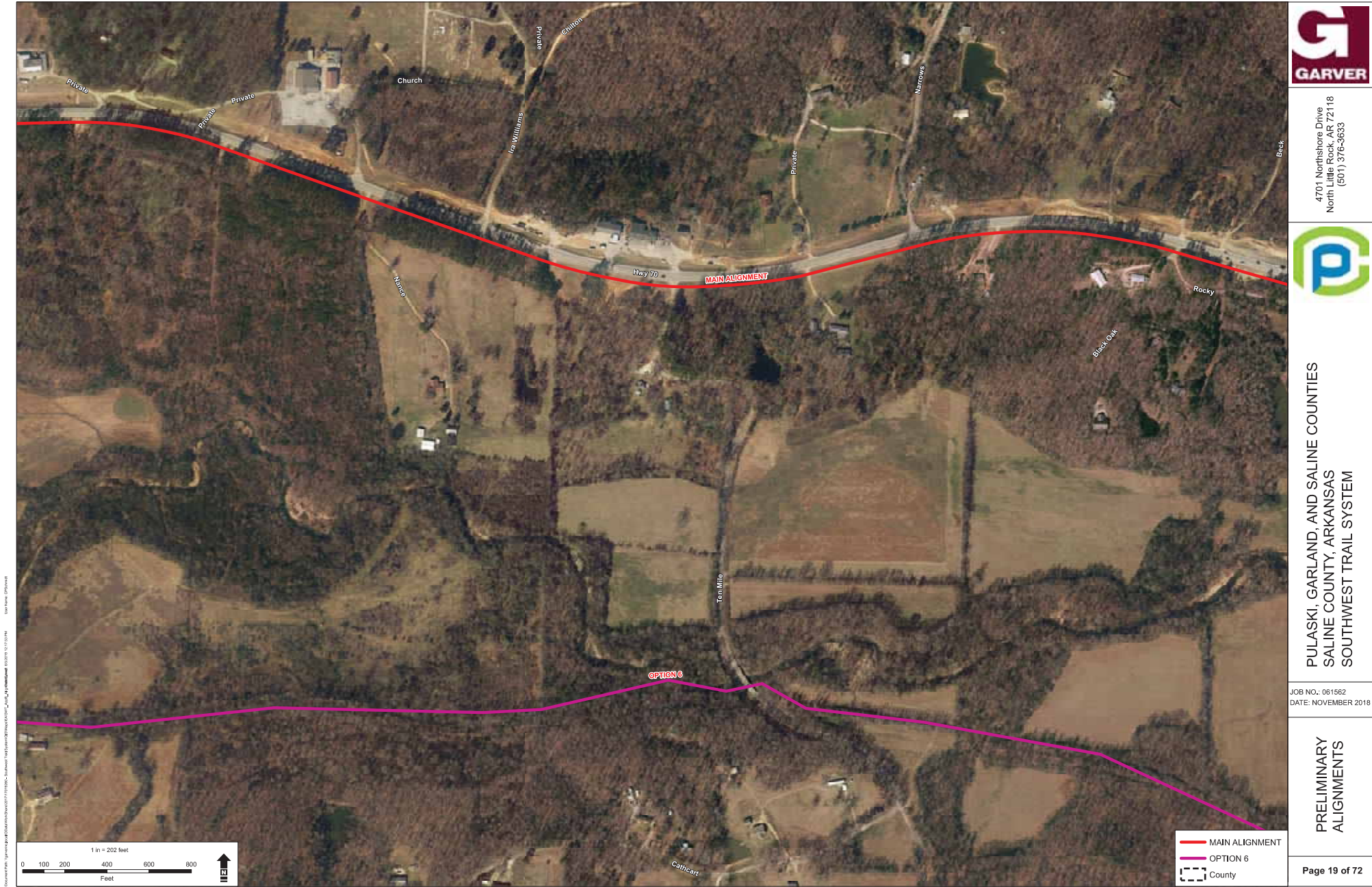
- MAIN ALIGNMENT
- OPTION 5
- OPTION 6
- Points of Interest
- County





	<p>4701 Northshore Drive North Little Rock, AR 72118 (501) 376-3633</p>
	<p>PULASKI, GARLAND, AND SALINE COUNTIES SALINE COUNTY, ARKANSAS SOUTHWEST TRAIL SYSTEM</p>
<p>JOB NO. 061562 DATE: NOVEMBER 2018</p>	<p>PRELIMINARY ALIGNMENTS</p>
<p>Page 18 of 72</p>	









4701 Northshore Drive  
North Little Rock, AR 72118  
(501) 376-3633

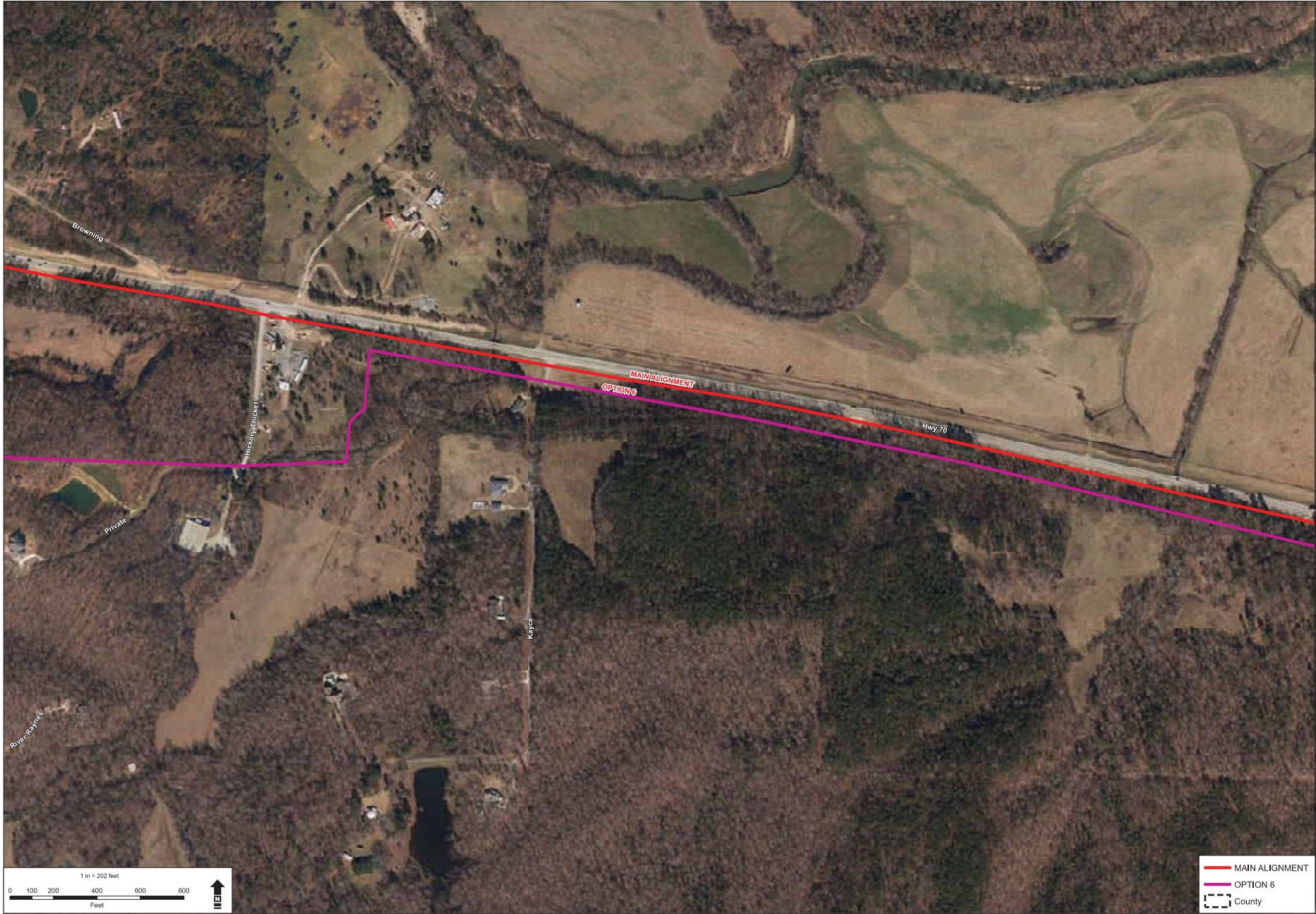


PULASKI, GARLAND, AND SALINE COUNTIES  
SALINE COUNTY, ARKANSAS  
SOUTHWEST TRAIL SYSTEM

JOB NO.: 061562  
DATE: NOVEMBER 2018

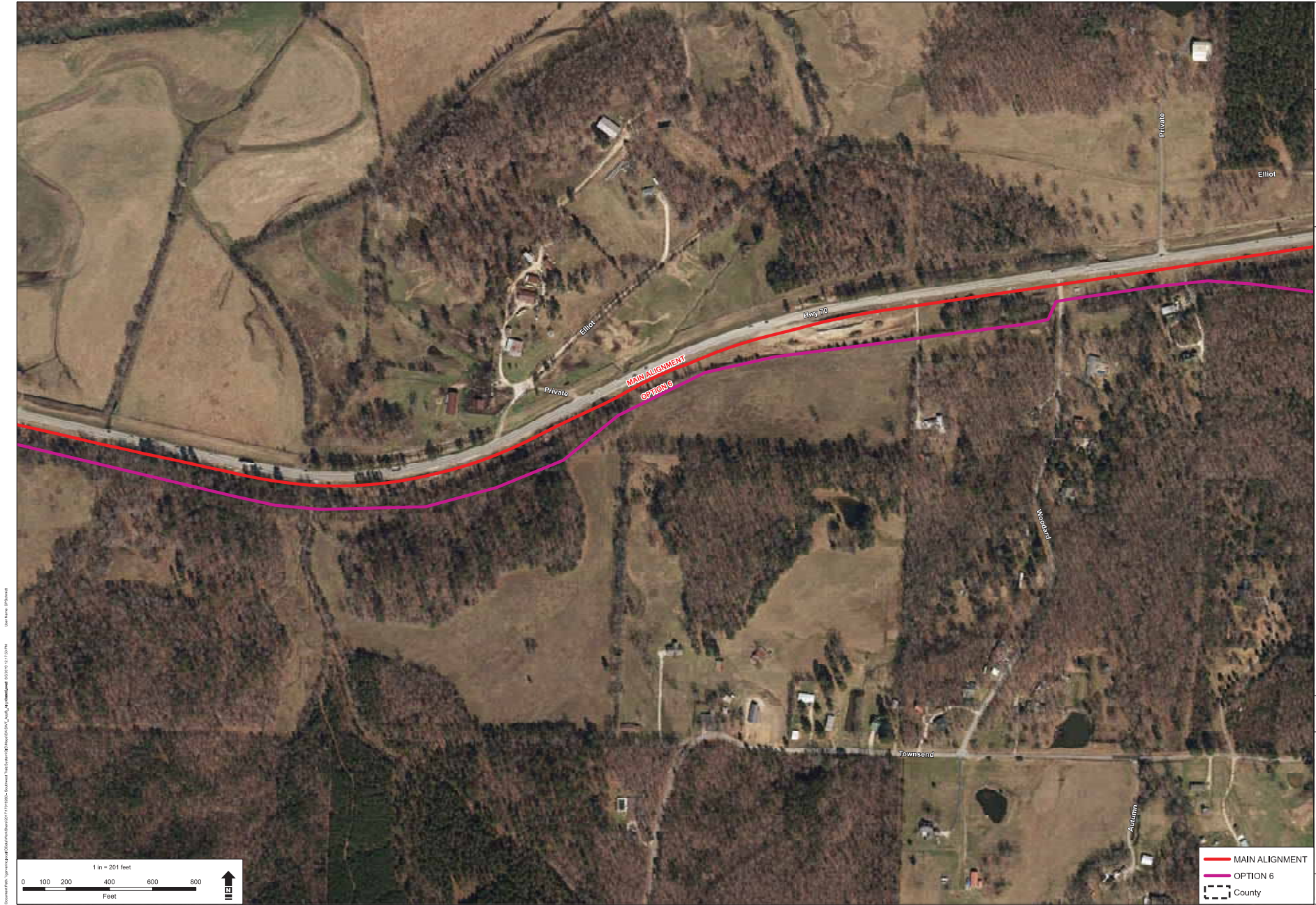
PRELIMINARY  
ALIGNMENTS





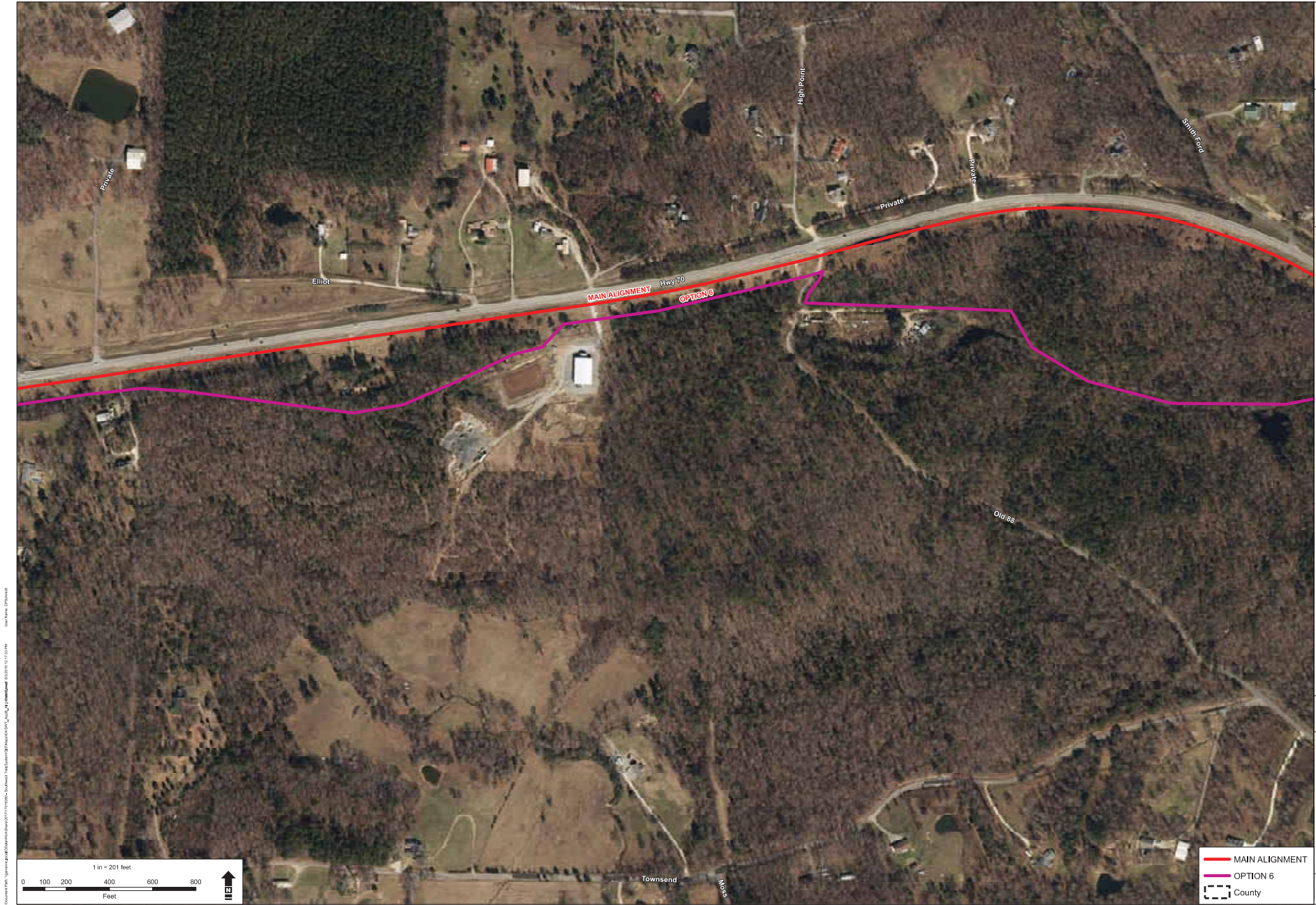
 4701 Northshore Drive North Little Rock, AR 72118 (501) 376-3633		<b>PULASKI, GARLAND, AND SALINE COUNTIES</b> <b>SALINE COUNTY, ARKANSAS</b> <b>SOUTHWEST TRAIL SYSTEM</b>	
		JOB NO.: 061562 DATE: NOVEMBER 2018	
		<b>PRELIMINARY</b> <b>ALIGNMENTS</b>	
		<b>Page 21 of 72</b>	





	4701 Northshore Drive North Little Rock, AR 72118 (501) 376-3633	
PULASKI, GARLAND, AND SALINE COUNTIES SALINE COUNTY, ARKANSAS SOUTHWEST TRAIL SYSTEM		
JOB NO.: 061562 DATE: NOVEMBER 2018		
PRELIMINARY ALIGNMENTS		
Page 22 of 72		





	4701 Northshore Drive North Little Rock, AR 72118 (501) 376-3633
	PULASKI, GARLAND, AND SALINE COUNTIES SALINE COUNTY, ARKANSAS SOUTHWEST TRAIL SYSTEM
JOB NO.: 061562 DATE: NOVEMBER 2018	PRELIMINARY ALIGNMENTS
Page 23 of 72	

Document Path: \\garver-ar\projects\061562\061562\_Southwest\_Trail\_System\Map\_Series\Map\_Series\_061562\_Southwest\_Trail\_System.aprx  
 User: jgarver Date: 11/15/2018 Time: 10:10:10 AM





	<p>4701 Northshore Drive North Little Rock, AR 72118 (501) 376-3633</p>		<p>PULASKI, GARLAND, AND SALINE COUNTIES SALINE COUNTY, ARKANSAS SOUTHWEST TRAIL SYSTEM</p>
<p>JOB NO.: 061562 DATE: NOVEMBER 2018</p>			
<p>PRELIMINARY ALIGNMENTS</p>			<p>Page 24 of 72</p>

- MAIN ALIGNMENT
- OPTION 6
- OPTION 7
- County









4701 Northshore Drive  
North Little Rock, AR 72118  
(501) 376-3633



PULASKI, GARLAND, AND SALINE COUNTIES  
SALINE COUNTY, ARKANSAS  
SOUTHWEST TRAIL SYSTEM

JOB NO. 061562  
DATE: NOVEMBER 2018

PRELIMINARY  
ALIGNMENTS





4701 Northshore Drive  
North Little Rock, AR 72118  
(501) 376-3633

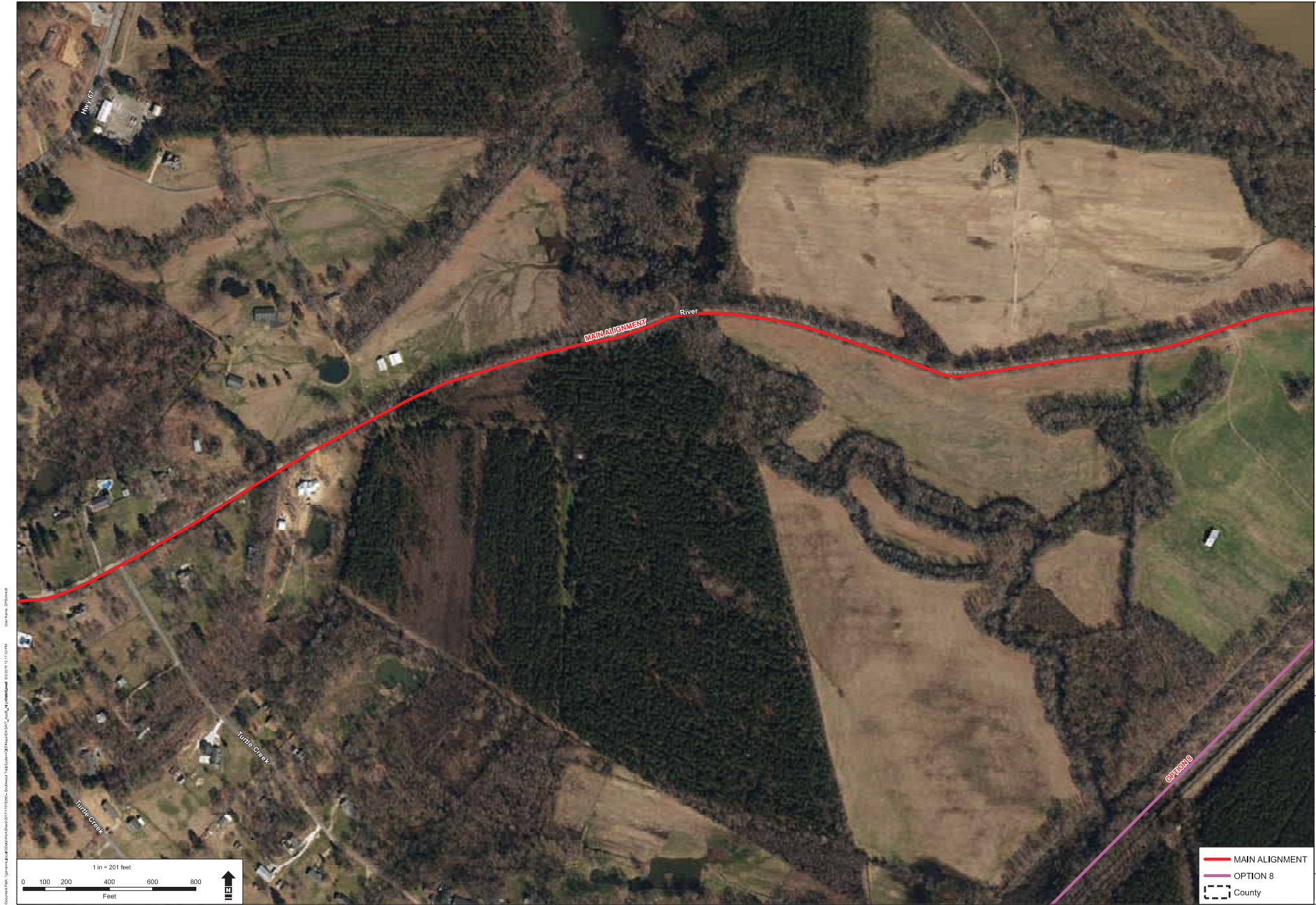


PULASKI, GARLAND, AND SALINE COUNTIES  
SALINE COUNTY, ARKANSAS  
SOUTHWEST TRAIL SYSTEM

JOB NO.: 061562  
DATE: NOVEMBER 2018

PRELIMINARY  
ALIGNMENTS





4701 Northshore Drive  
North Little Rock, AR 72118  
(501) 376-3633

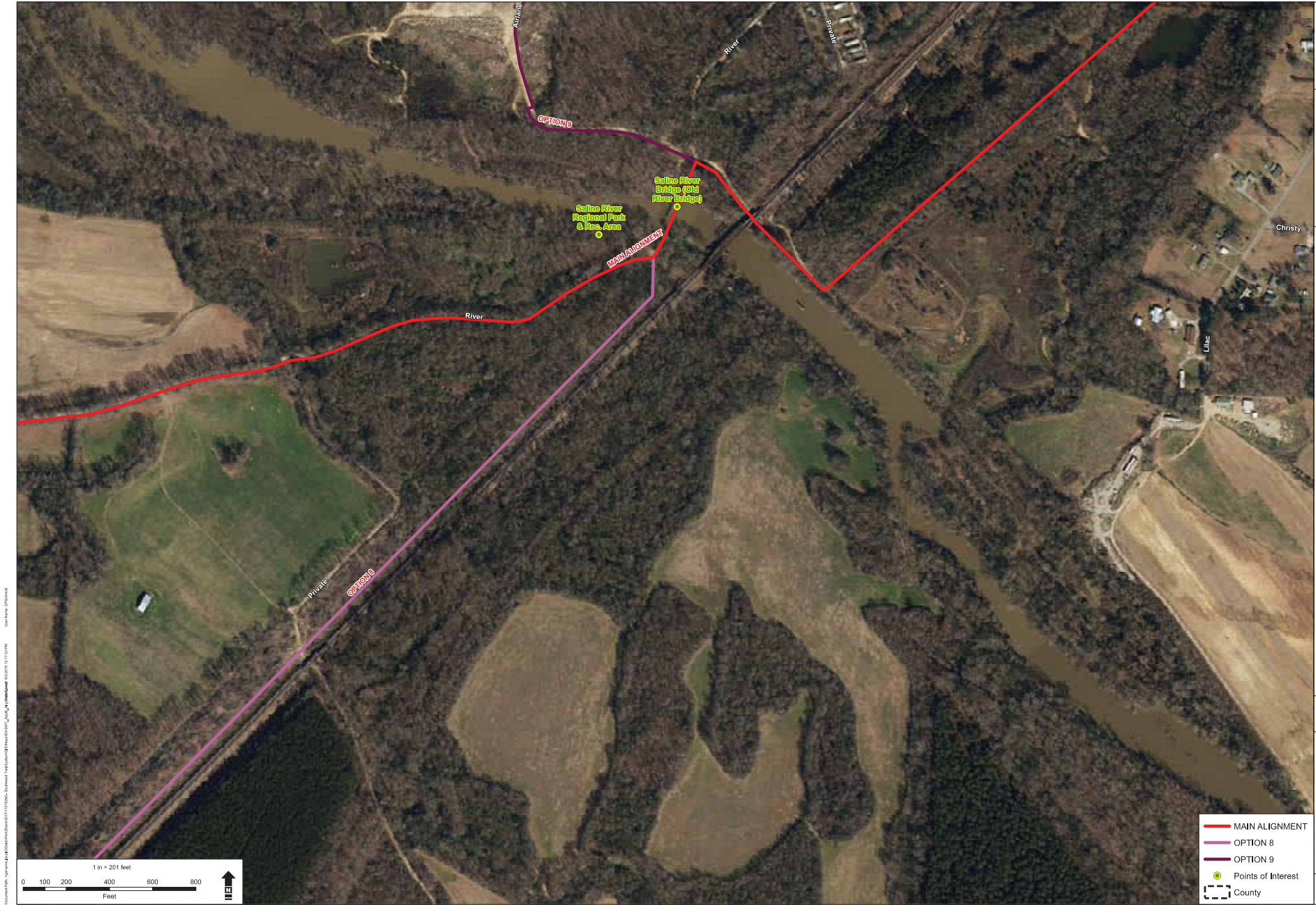


PULASKI, GARLAND, AND SALINE COUNTIES  
SALINE COUNTY, ARKANSAS  
SOUTHWEST TRAIL SYSTEM

JOB NO.: 061562  
DATE: NOVEMBER 2018

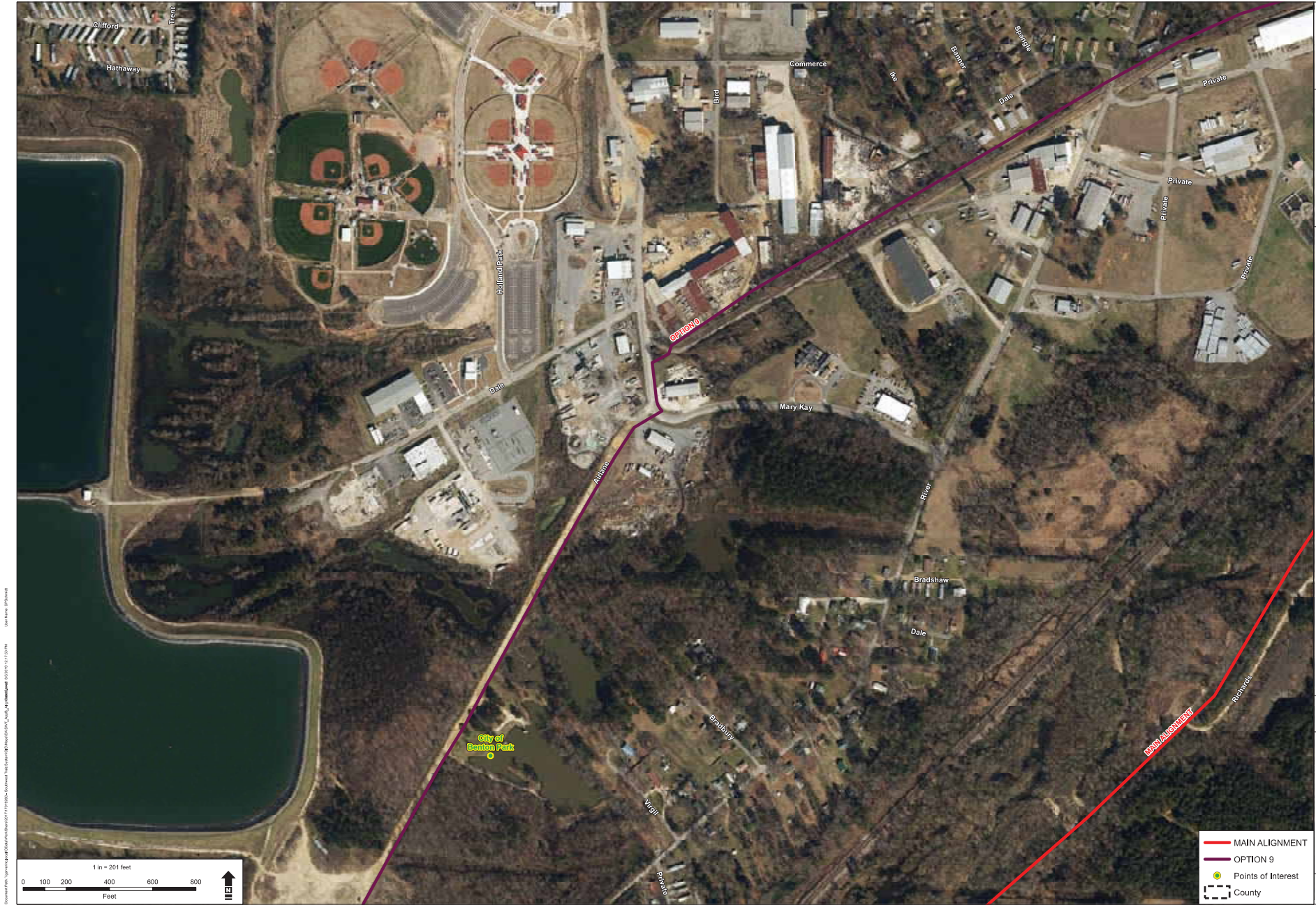
PRELIMINARY  
ALIGNMENTS





	<p>4701 Northshore Drive North Little Rock, AR 72118 (501) 376-3633</p>
	<p>PULASKI, GARLAND, AND SALINE COUNTIES SALINE COUNTY, ARKANSAS SOUTHWEST TRAIL SYSTEM</p>
<p>JOB NO.: 061562 DATE: NOVEMBER 2018</p>	<p>PRELIMINARY ALIGNMENTS</p>





	<p>4701 Northshore Drive North Little Rock, AR 72118 (501) 376-3633</p>		<p>PULASKI, GARLAND, AND SALINE COUNTIES SALINE COUNTY, ARKANSAS SOUTHWEST TRAIL SYSTEM</p>	<p>JOB NO. 061562 DATE: NOVEMBER 2018</p>
<p>PRELIMINARY ALIGNMENTS</p> <p>Page 30 of 72</p>				







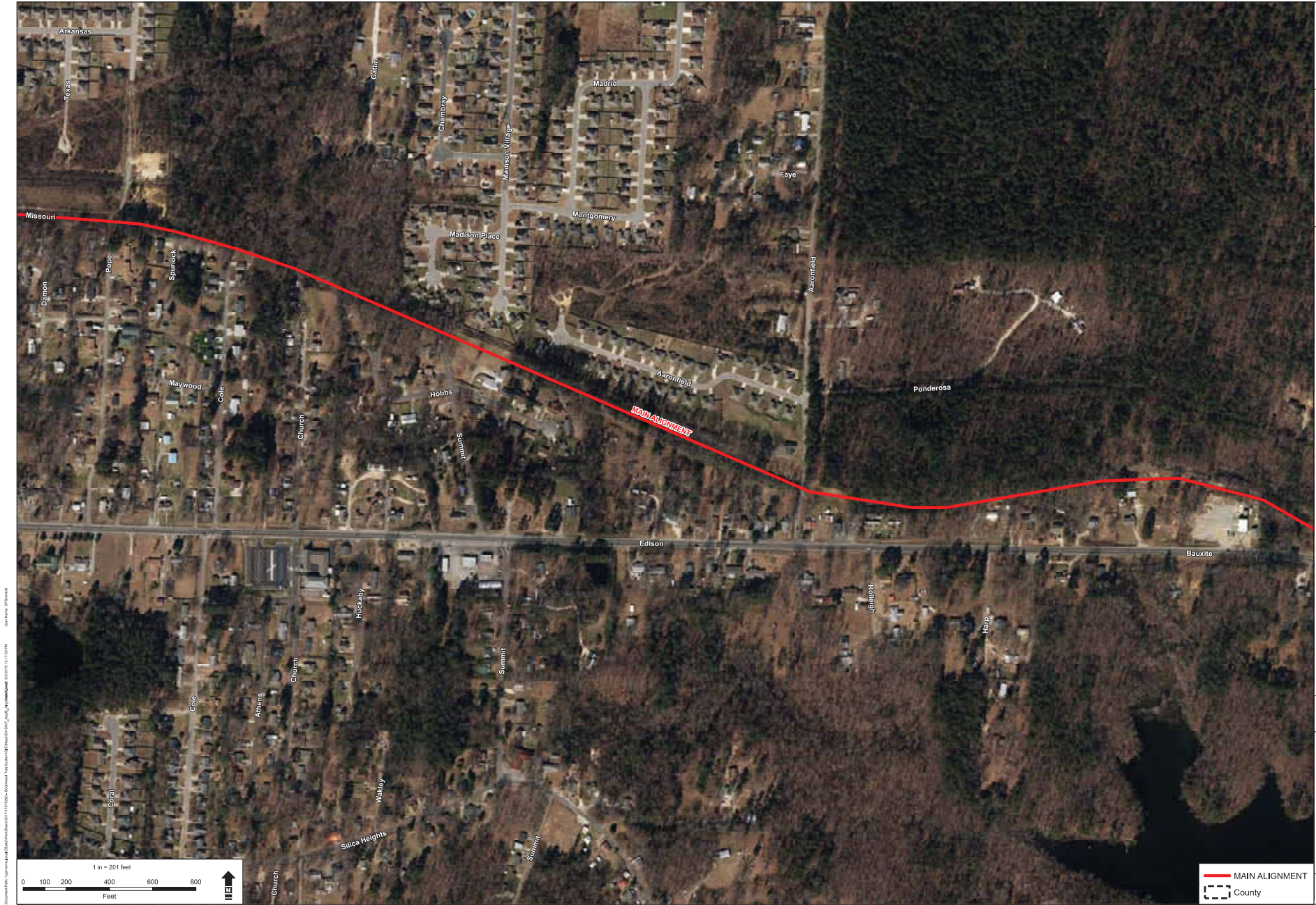


	<p>4701 Northshore Drive North Little Rock, AR 72118 (501) 376-3633</p>		<p>PULASKI, GARLAND, AND SALINE COUNTIES SALINE COUNTY, ARKANSAS SOUTHWEST TRAIL SYSTEM</p>
<p>JOB NO. 061562 DATE: NOVEMBER 2018</p>			
<p>PRELIMINARY ALIGNMENTS</p>			<p>Page 32 of 72</p>





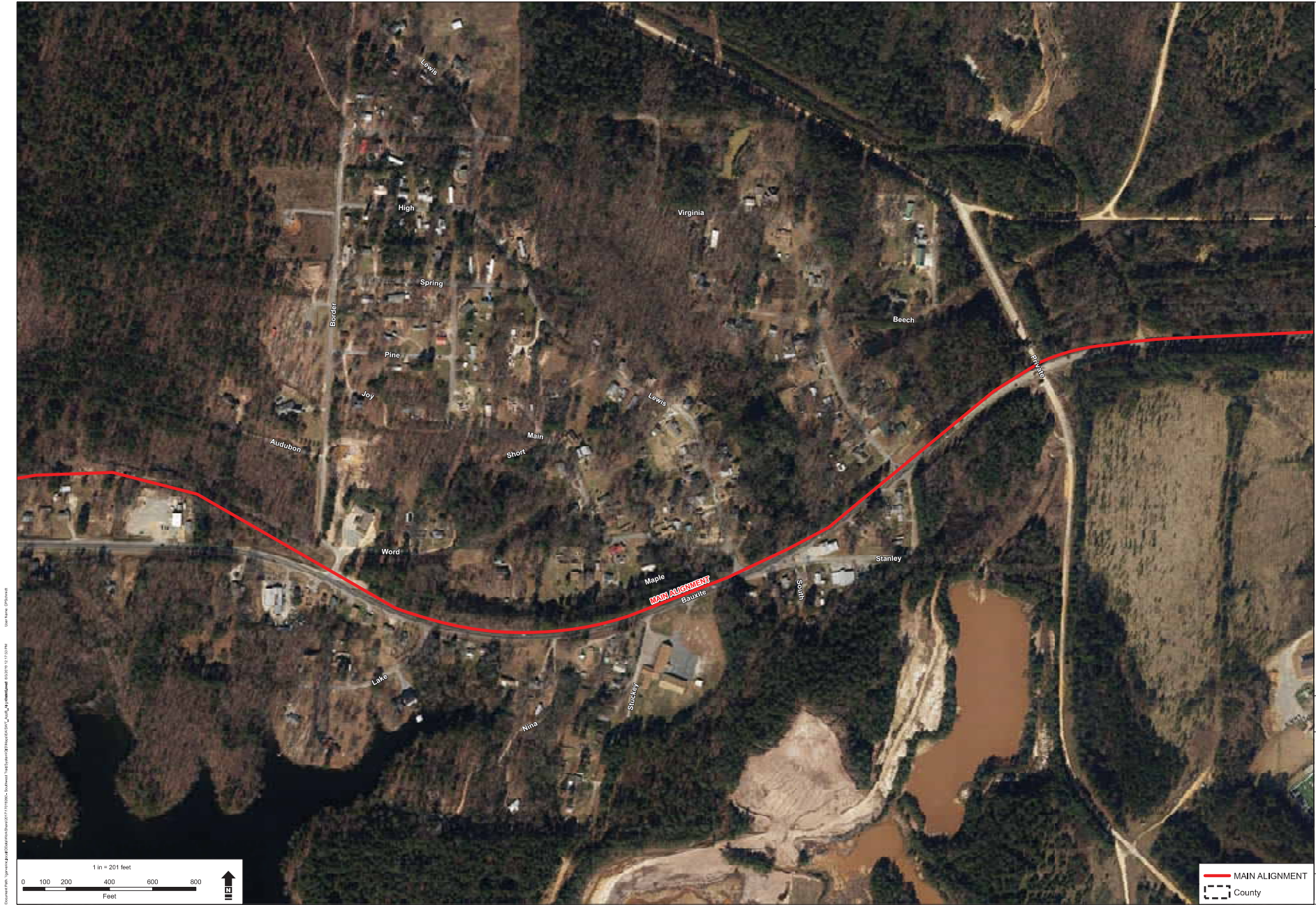




	<p>4701 Northshore Drive North Little Rock, AR 72118 (501) 376-3633</p>
	<p>PULASKI, GARLAND, AND SALINE COUNTIES SALINE COUNTY, ARKANSAS SOUTHWEST TRAIL SYSTEM</p>
<p>JOB NO.: 061562 DATE: NOVEMBER 2018</p>	<p>PRELIMINARY ALIGNMENTS</p>

 MAIN ALIGNMENT  
 County





	<p>4701 Northshore Drive North Little Rock, AR 72118 (501) 376-3633</p>		<p>PULASKI, GARLAND, AND SALINE COUNTIES SALINE COUNTY, ARKANSAS SOUTHWEST TRAIL SYSTEM</p>
<p>JOB NO.: 061562 DATE: NOVEMBER 2018</p>		<p>PRELIMINARY ALIGNMENTS</p>	<p>Page 35 of 72</p>

 MAIN ALIGNMENT  
 County